

Human VEGF165 Protein

Cat. No. VEG-HM465

Description

Source	Recombinant Human VEGF165 Protein is expressed from HEK293 with His tag and Avi tag at the C-Terminus. It contains Ala27-Arg191.
Accession	P15692-4
Molecular Weight	The protein has a predicted MW of 22.2 kDa. Due to glycosylation, the protein migrates to 28-35 kDa under reduced (R) condition, 45-60 kDa under Non reducing (N) condition based on Bis-Tris PAGE result.
Endotoxin	Less than 1 EU per µg by the LAL method.
Purity	>95% as determined by Bis-Tris PAGE

Formulation and Storage

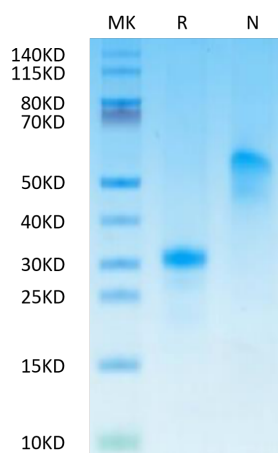
Formulation	Lyophilized from 0.22 µm filtered solution in PBS (pH 7.4). Normally 8% trehalose is added as protectant before lyophilization.
Reconstitution	Centrifuge the tube before opening. Reconstituting to a concentration more than 100 µg/ml is recommended. Dissolve the lyophilized protein in distilled water.
Storage	-20 to -80°C for 12 months as supplied from date of receipt. -80°C for 3 months after reconstitution. Recommend to aliquot the protein into smaller quantities for optimal storage. Please minimize freeze-thaw cycles.

Background

Vascular endothelial growth factor (VEGF or VEGF-A), also known as vascular permeability factor (VPF), is a potent mediator of both angiogenesis and vasculogenesis in the fetus and adult. VEGF165 appears to be the most abundant and potent isoform, followed by VEGF121 and VEGF189.

Assay Data

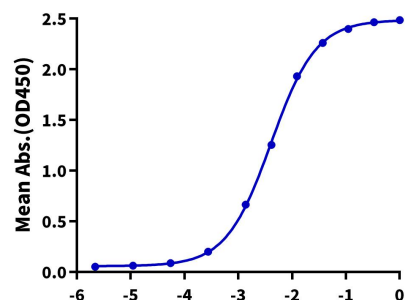
Bis-Tris PAGE



Human VEGF165 on Bis-Tris PAGE under reduced (R) condition and Non reducing (N) condition. The purity is greater than 95%.

ELISA Data

Human VEGF165, His Tag ELISA
0.05µg Human VEGF165, His Tag Per Well



Immobilized Human VEGF165 at 0.5 µg/ml (100 µl/well) on the plate. Dose response curve for Anti-VEGF165 Antibody, hFc Tag with the EC50 of 4.1 ng/ml determined by ELISA (QC Test).

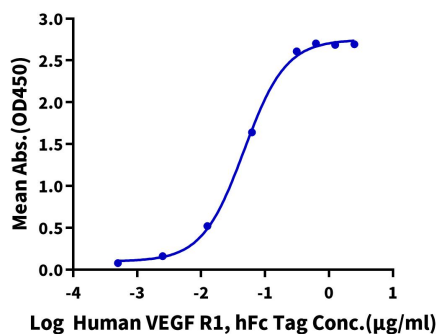
Log Anti-VEGF165 Antibody, hFc Tag Conc.(µg/ml)

Assay Data

ELISA Data

Human VEGF165, His Tag ELISA

0.1µg Human VEGF165, His Tag Per Well

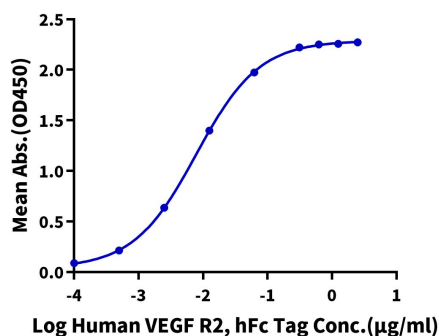


Immobilized Human VEGF165, His Tag at 1µg/ml(100µl/well) on the plate. Dose response curve for Human VEGF R1, hFc Tag with the EC50 of 46.8ng/ml determined by ELISA.

ELISA Data

Human VEGF165, His Tag ELISA

0.1µg Human VEGF165, His Tag Per Well



Immobilized Human VEGF165, His Tag at 1µg/ml (100µl/well) on the plate. Dose response curve for Human VEGF R2, hFc Tag with the EC50 of 7.8ng/ml determined by ELISA.